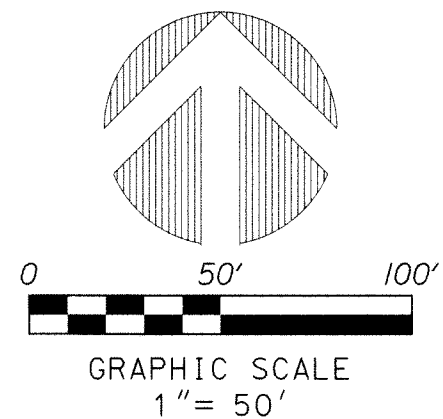


# PERIMETER

**SURVEYING & MAPPING**  
Certificate of Authorization No. LB7264  
Prepared by: Jeff S. Hodapp, P.S.M.  
947 Clint Moore Road  
Boca Raton, Florida 33487  
Tel: (561) 241-9988  
Fax: (561) 241-5182

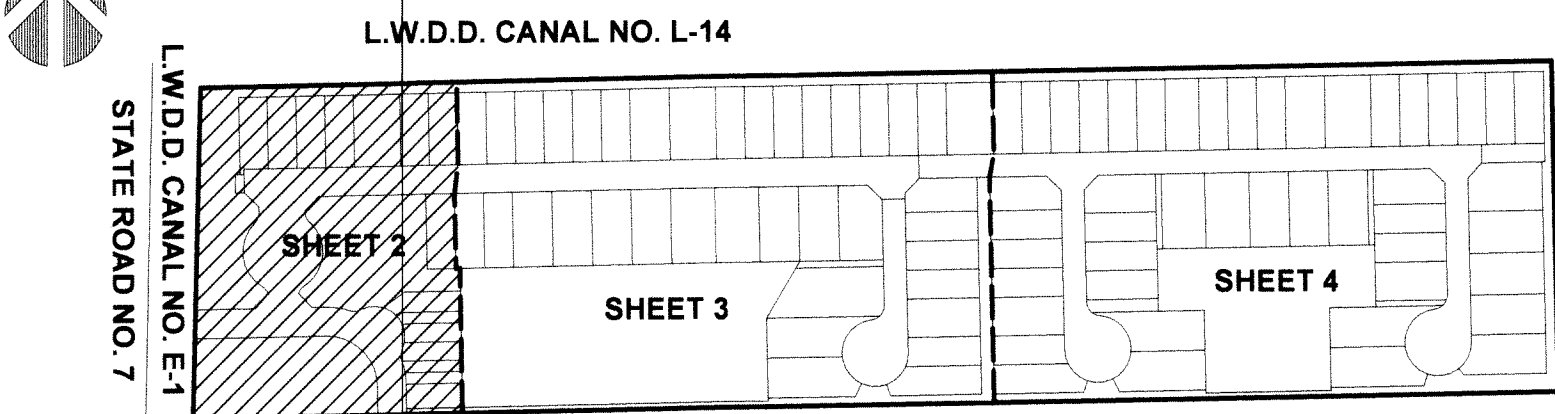
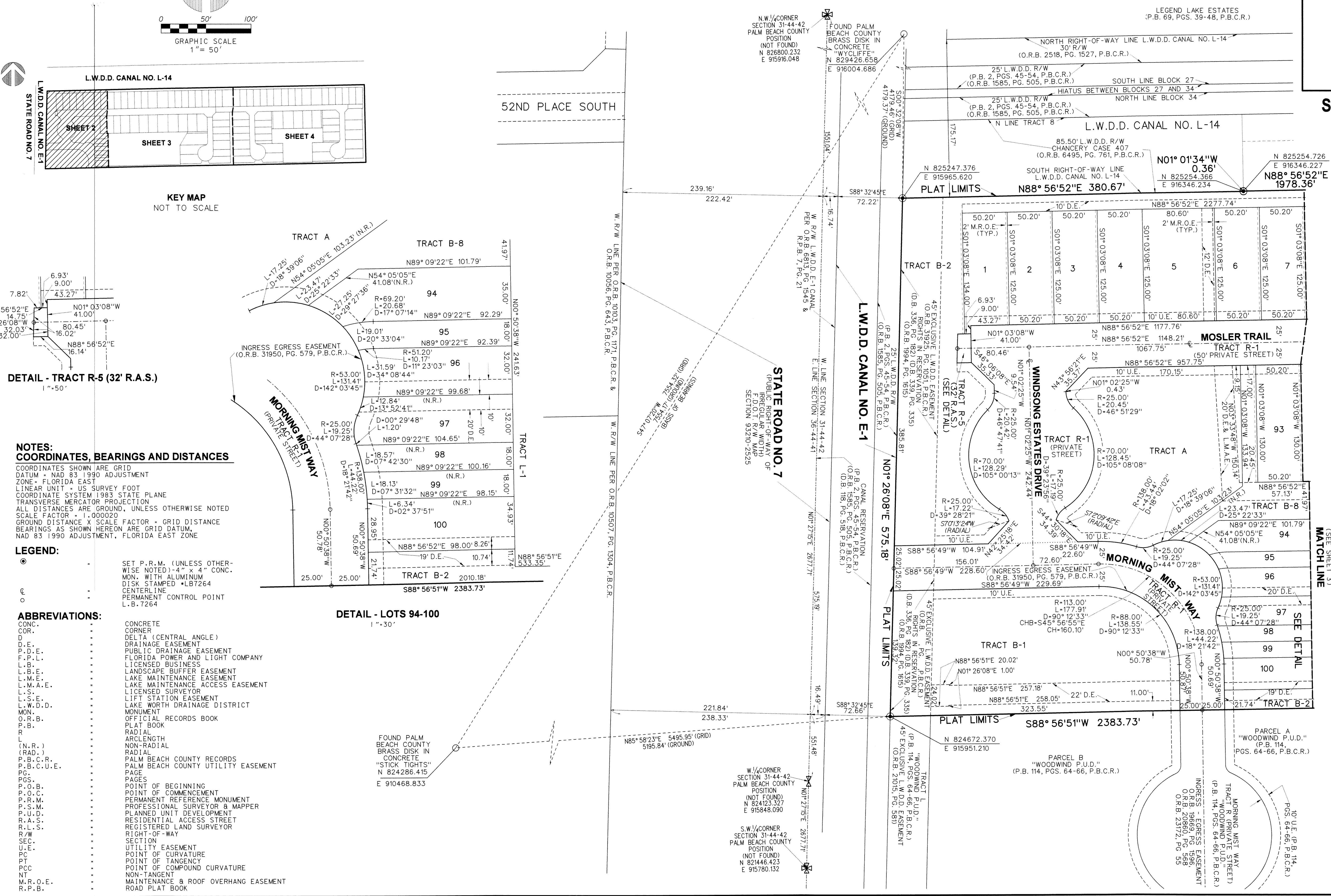


# WINDSONG ESTATES

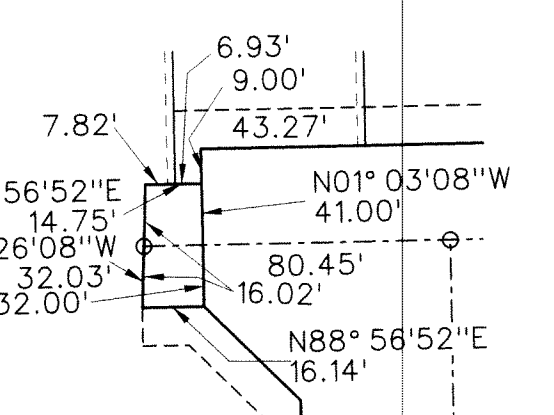
**A REPLAT OF A PORTION OF TRACTS 5, 6, 7, AND 8 OF BLOCK 34, "PALM BEACH FARMS CO. PLAT NO. 3", ACCORDING TO THE PLAT THEREOF, AS RECORDED IN PLAT BOOK 2 AT PAGES 45 THROUGH 54 OF THE PUBLIC RECORDS OF PALM BEACH COUNTY, FLORIDA, IN SECTION 31, TOWNSHIP 44 SOUTH, RANGE 42 EAST, PALM BEACH COUNTY, FLORIDA.**

167

SHEET 2 OF 4



KEY MAP  
NOT TO SCALE



DETAIL - TRACT R-5 (32' R.A.S.)  
1" = 50'

**NOTES:**  
**COORDINATES, BEARINGS AND DISTANCES**  
COORDINATES SHOWN ARE GRID  
DATUM - NAD 83 1990 ADJUSTMENT  
ZONE - FLORIDA EAST  
LINEAR UNIT - US SURVEY FOOT  
COORDINATE SYSTEM 1983 STATE PLANE  
TRANSVERSE MERCATOR PROJECTION  
ALL DISTANCES ARE GROUND, UNLESS OTHERWISE NOTED  
SCALE FACTOR - 1.000020  
GROUND DISTANCE X SCALE FACTOR = GRID DISTANCE  
BEARINGS AS SHOWN HEREON ARE GRID DATUM,  
NAD 83 1990 ADJUSTMENT, FLORIDA EAST ZONE

**LEGEND:**  
● SET P.R.M. (UNLESS OTHERWISE NOTED) 1/4" x 4" CONC. DISK STAMPED \*LB7264  
○ CENTERLINE  
○ PERMANENT CONTROL POINT  
○ L.B. 7264

**ABBREVIATIONS:**  
CONC. CONCRETE  
COR. CORNER  
D. DELTA (CENTRAL ANGLE)  
D.E. DRAINAGE EASEMENT  
P.D.E. PUBLIC DRAINAGE EASEMENT  
F.P.L. FLORIDA POWER AND LIGHT COMPANY  
L.B. LICENSED BUSINESS  
L.B.E. LANDSCAPE BUFFER EASEMENT  
L.M.E. LAKE MAINTENANCE EASEMENT  
L.M.A.E. LAKE MAINTENANCE ACCESS EASEMENT  
L.S. LICENSED SURVEYOR  
L.S.E. LIFT STATION EASEMENT  
L.W.D.D. LAKE WORTH DRAINAGE DISTRICT  
MON. MONUMENT  
O.R.B. OFFICIAL RECORDS BOOK  
P.B. PLAT BOOK  
R. RADIAL  
L.N.R. LENGTH NON-RADIAL  
(RAD.) RADIAL  
P.B.C.R. PALM BEACH COUNTY RECORDS  
P.B.C.U.E. PALM BEACH COUNTY UTILITY EASEMENT  
PG. PAGE  
PGS. PAGES  
P.O.B. POINT OF BEGINNING  
P.O.C. POINT OF COMMENCEMENT  
P.R.M. PERMANENT REFERENCE MONUMENT  
P.S.M. PROFESSIONAL SURVEYOR & MAPPER  
P.U.D. PLANNED UNIT DEVELOPMENT  
R.A.S. RESIDENTIAL ACCESS STREET  
R.L.S. REGISTERED LAND SURVEYOR  
R/W RIGHT-OF-WAY  
SEC. SECTION  
U.E. UTILITY EASEMENT  
P.C. POINT OF CURVATURE  
PT. POINT OF TANGENCY  
P.C.C. POINT OF COMPOUND CURVATURE  
NT. NON-TANGENT  
M.R.O.E. MAINTENANCE & ROOF OVERHANG EASEMENT  
R.P.B. ROAD PLAT BOOK

DETAIL - LOTS 94-100  
1" = 30'

STATE ROAD NO. 7  
(PUBLISHED RIGHT-OF-WAY OF PALM BEACH COUNTY)  
SECTION 31-44-42  
SECTION 93210-2525

W/4 CORNER SECTION 31-44-42 PALM BEACH COUNTY POSITION (NOT FOUND) N 824123.327 E 915848.090  
S.W/4 CORNER SECTION 31-44-42 PALM BEACH COUNTY POSITION (NOT FOUND) N 821446.423 E 915780.132

(SEE SHEET 3)

SEE DETAIL